

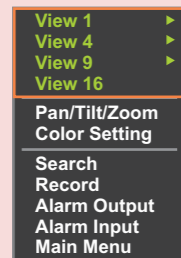
Quick Reference

Important Precautions

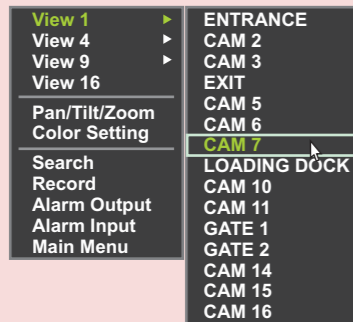
- Ensure the DVR is located in a dust-free environment that permits proper airflow.
- Do not subject the DVR to vibration or sudden jolts.
- Always ensure the cooling fans are free of dust or any obstruction that may prevent their operation.
- Do not insert scratched or warped CDs into the CDRW drive as damage may result.
- Safeguard against liquids and other electrical hazards.

Viewing Live Cameras

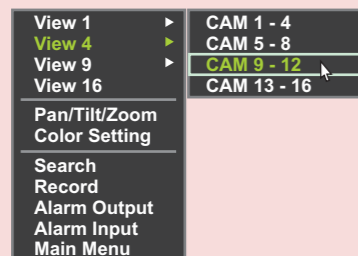
- 1 Right-click on the screen and select one of the following View selections.



- 2 The submenu that appears when selecting **View 1** allows selection of a single camera. Customised camera titles appear in this menu.



- 3 Selecting **View 4**, **View 9** or **View 16** will display multiple cameras on the screen. **View 4** and **View 9** submenus allow for different camera groups to be selected.



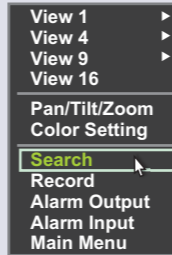
Professional Series Digital Video Recorder



Live Viewing & Playback Guide

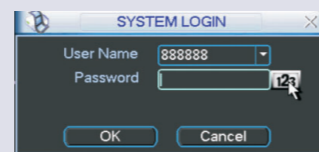
Searching For Footage

1. Right-click on the screen and select **Search**.



2. Use the drop down menu to select your Local Access **User Name** and enter your **Password** if required.

Store your User Name and Password in a safe place as the DVR may require manufacturer servicing to reset a Local User administrative account.



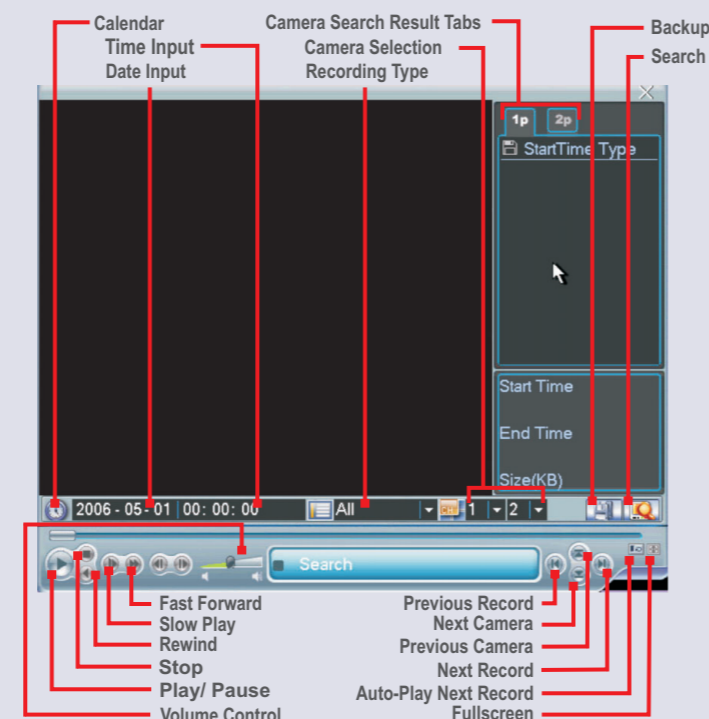
3. Clicking on the password box displays a virtual keyboard which can be used to enter the password. Selecting the icon alongside the password box will allow toggling between numerical and alphabet input.



4. Once the password is entered select **OK** to proceed.

Repeated unsuccessful login attempts will sound a buzzer and cause a security lockout. DVR power must be reset before attempting to log on again.

5. The Playback interface will appear.

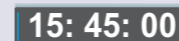


6. Either click on the Calendar button to view which days have recorded footage or input a date into the Date Input. Days highlighted in blue have recorded footage.

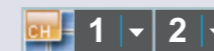


7. Entering the time into the **Time Input** is optional and can provide more accurate searches.

If you do not enter this information, the list of records will start at midnight the morning of the date selected.



8. Select the camera number(s).

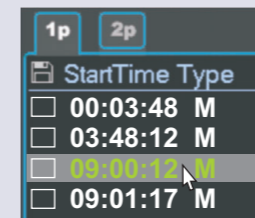


9. Click on the **Search** icon.



10. A list of records will appear underneath the **Camera Search Result Tabs** and double-clicking on the record commences playback.

If the DVR supports dual-channel playback and a second camera is selected with available footage at the time period selected, the second camera will also playback.



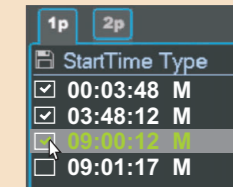
11. To stop playback and select another camera or time period, right-click or click on **Stop**. After selecting a new camera or time period, click on **Search** to refresh the list of records.

12. To return to live view right-click or select **Stop** to cancel any playback and right-click a second time to exit the Playback interface.

Archiving Footage

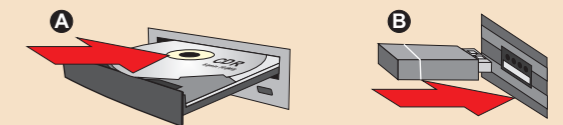
1. Enter the Playback interface as directed in the **Searching for footage** module and complete **Step 1** through to **Step 9**.

2. Identify the desired record(s) to archive within the listed records underneath the **Camera Search Result Tabs**. Click on the box to place a tick mark next to the record(s) required.



3. If another camera or time period is required, repeat **Step 6** through to **Step 9** of the **Searching for footage** module and tick the box alongside the additional record(s).

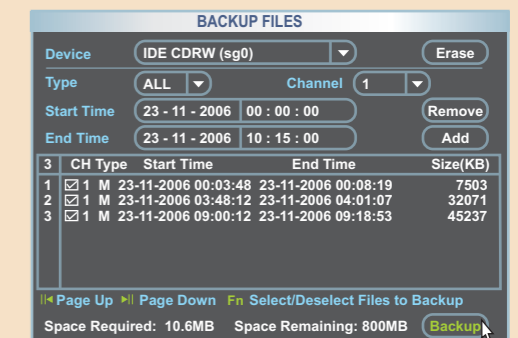
4. Insert a blank CDR, CD-RW or USB storage into the DVR.



5. Click on the **Backup** icon in the Playback Interface.



6. Review the record(s) listed in the Backup interface and verify that there is sufficient space on the storage medium selected.



7. Click **Backup** to commence the backup process. All selected files will be archived to the storage medium and the player program will be added.

CDR disks will be finalised during the backup process to create a read-only copy for evidentiary purposes. Use CD-RW or USB if requiring storage medium that is reusable.

Quick Reference



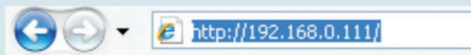
Professional Series Digital Video Recorder

Live Viewing & Playback Guide

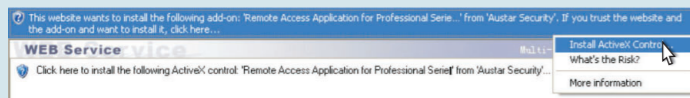


Remote Access via Internet Explorer

1. Launch **Internet Explorer**.
2. Type the IP address of the DVR and press **Enter**.



3. When connecting to the DVR for the first time a security alert will display. Select **Install ActiveX Control**.



4. A second alert will appear to confirm installation of the ActiveX applet. Click **Install** to proceed.

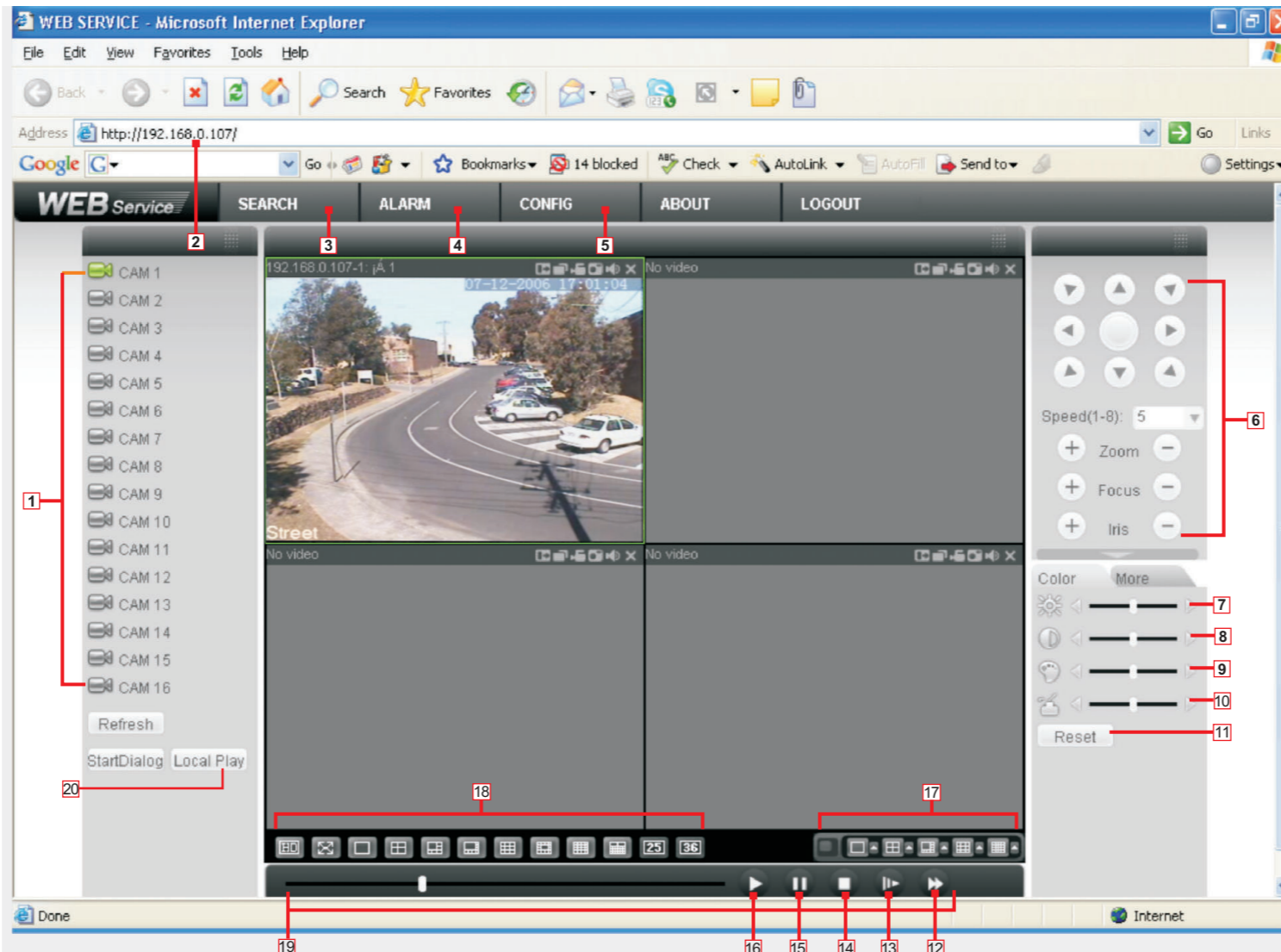
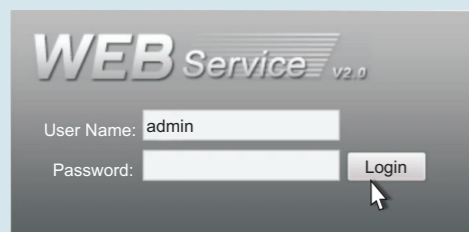


Depending upon browser security settings the ActiveX applet may not be able to install.

If this occurs click on **Tools** and select **Internet Options**. Click on the **Security** tab and select **Trusted Sites**. Select **Sites** and deselect **Require server verification (https:)** for all sites in this zone. Add the IP address of the DVR to this list and close the browser. Repeat Step 1 through to Step 4 above.

5. Enter your Remote Access **User Name** and **Password**.

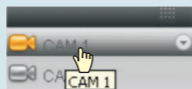
Note that Remote Access user accounts are not the same as Local Access accounts for the DVR menu interface.



- | | | |
|---|---|----------------------------------|
| 1. Real time monitor camera selection | 8. Contrast Level for Video | 14. Stop |
| 2. IP address bar | 9. Saturation Level for Video | 15. Pause |
| 3. Search, Download & Playback footage | 10. Hue Level for Video | 16. Play |
| 4. Alarm notification for specific events | 11. Reset back to default level for Brightness, Contrast, Saturation and Hue. | 17. Multi Window Video Preview |
| 5. DVR Configuration | 12. Fast Forward | 18. Multi Window Video Real-time |
| 6. PTZ Control | 13. Slow Play | 19. Playback Control Bar |
| 7. Brightness Level for Video | | 20. Outer Jog-shuttle |

Viewing Live Images

1. To view a camera, simply select a channel (highlighted in a green box) and then click on the camera you wish to view, eg. CAM 1.



2. To open additional viewing windows to watch more cameras, click on the custom window screen in the web page below and select the video windows you require.



3. To view multiple cameras over Internet connections, select from the bottom right hand corner of the web service window and select a type of **Multi-Window Video Preview** you desire.

Multi-Video Preview transmits the selected cameras in one window to save on bandwidth. The DVR can only transmit one Multi-Video Preview display at a time.

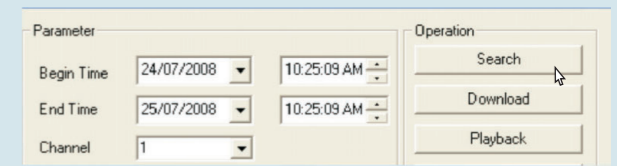


Viewing Recorded Images

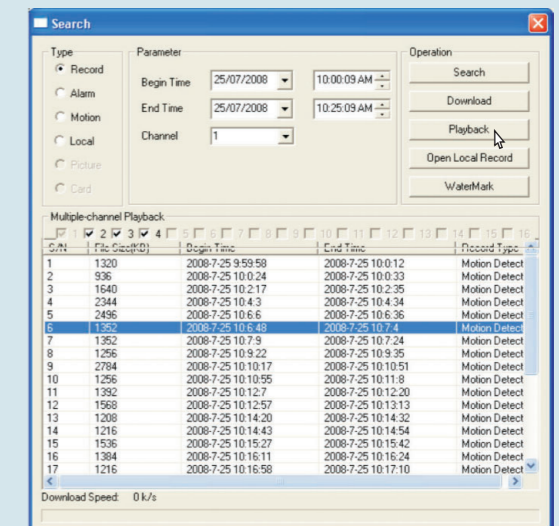
1. To view playback and download files click on **Search**, which is located at the top left corner of the web



2. Enter the **Begin Date** and **Begin Time** and the **End Date** and **End Time** and the **Channel** number. Click on **Search** to display a list of records for the Date/Time period specified on the selected **Channel**.



3. Select the desired record and click on **Playback** to view desired record (Note: the Search box may be blocking your view of the footage, so either close the Search Box or move the Search box away from the video footage that is being viewed).



4. To navigate the playback record/video footage such as Fast Forward / Slow Play / Stop / Play / Pause, you will need to click on the video footage that is currently playing and then you will see a playback control bar just below the **Multi-Window Video Preview**.



5. To download desired video footage to your computer, please select from the list of records you have displayed and click on **Download** (Note: the video footage file format will be saved in *.dav).

The downloaded video footage can also be played on the Web Service via **Search** or **Local Play** or the **Player Software** that comes with the CD.