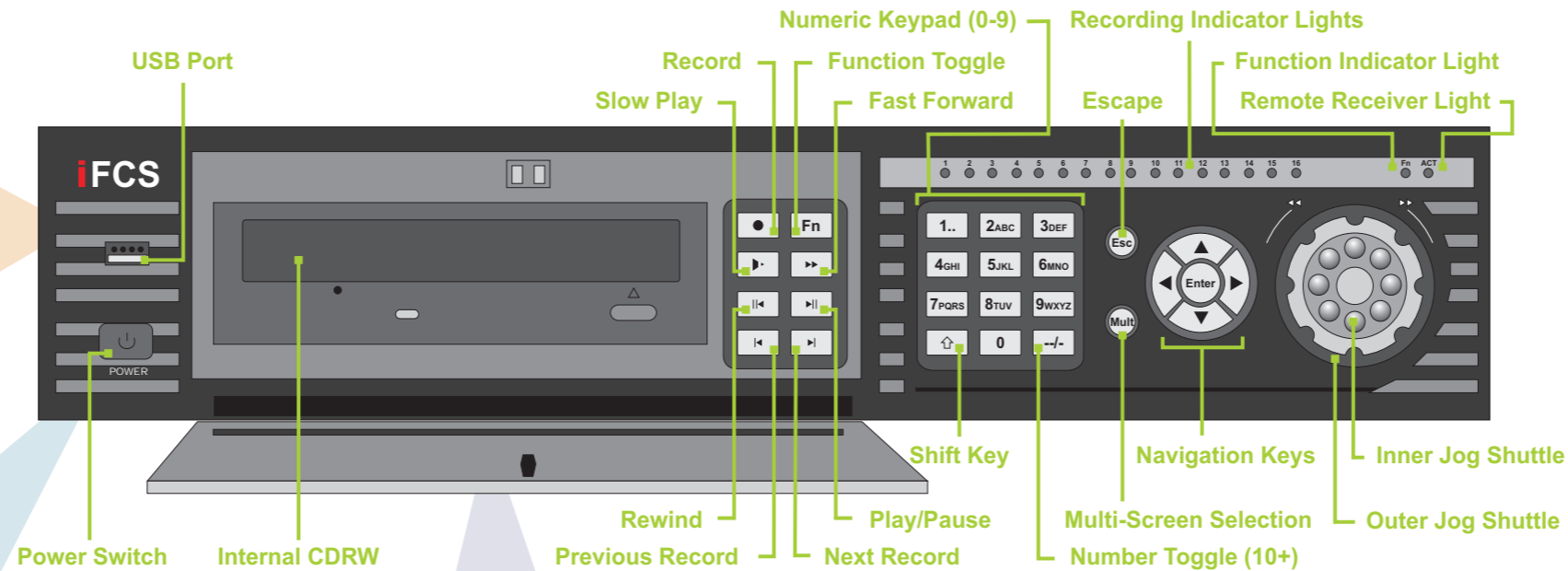


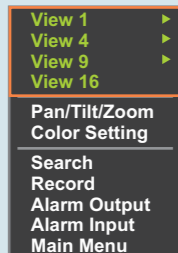
### Important Precautions

- Ensure the DVR is located in a dust-free environment that permits proper airflow.
- Do not subject the DVR to vibration or sudden jolts.
- Always ensure the cooling fans are free of dust or any obstruction that may prevent their operation.
- Do not insert scratched or warped CDs into the CDRW drive as damage may result.
- Safeguard against liquids and other electrical hazards.

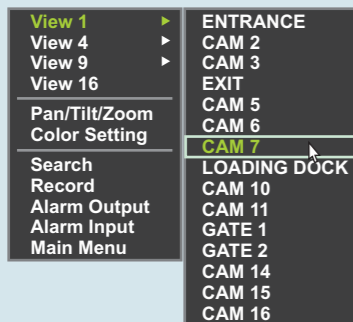


### Viewing live cameras

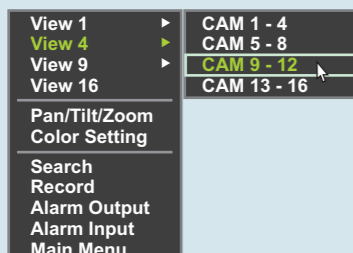
- 1 Right-click on the screen and select one of the following **View** selections.



- 2 The submenu that appears when selecting **View 1** allows selection of a single camera. Customised camera titles appear in this menu.

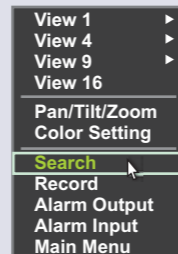


- 3 Selecting **View 4**, **View 9** or **View 16** will display multiple cameras on the screen. **View 4** and **View 9** submenus allow for different camera groups to be selected.



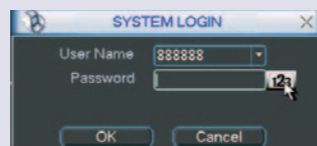
### Searching for footage

- 1 Right-click on the screen and select **Search**



- 2 Use the drop down menu to select your Local Access **User Name** and enter your **Password** if required.

*Store your User Name and Password in a safe place as the DVR may require manufacturer servicing to reset a Local User administrative account.*

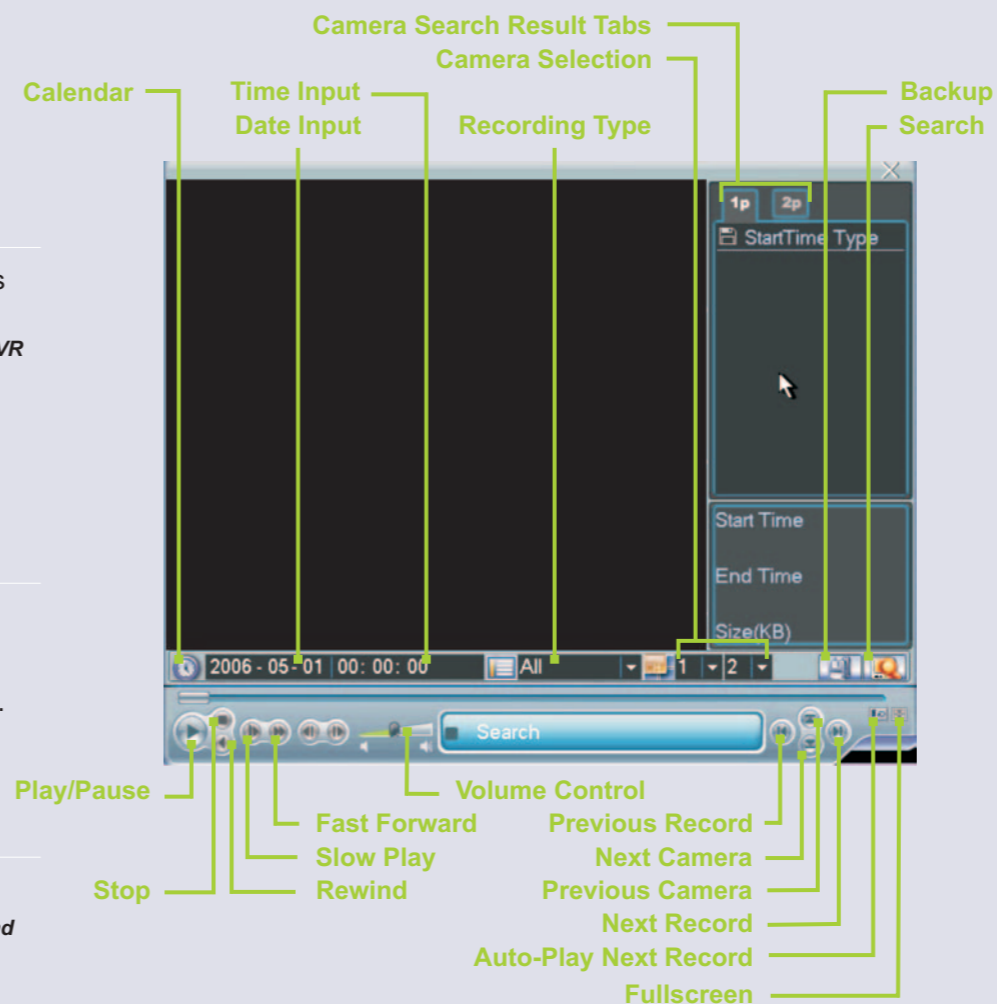


- 3 Clicking on the password box displays a virtual keyboard which can be used to enter the password. Selecting the icon alongside the password box will allow toggling between numerical and alphabet input.



- 4 Once the password is entered select **OK** to proceed. *Repeated unsuccessful login attempts will sound a buzzer and cause a security lockout. DVR power must be reset before attempting to log on again.*

- 5 The Playback interface will appear.



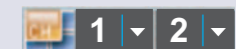
- 6 Either click on the **Calendar** button to view which days have recorded footage or input a date into the **Date Input**. Days highlighted in blue have recorded footage.



- 7 Entering the time into the **Time Input** is optional and can provide more accurate searches. *If you do not enter this information, the list of records will start at midnight the morning of the date selected.*

15:45:00

- 8 Select the camera number(s).

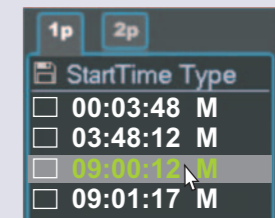


- 9 Click on the **Search** icon.



- 10 A list of records will appear underneath the **Camera Search Result Tabs** and double-clicking on the record commences playback.

*If the DVR supports dual-channel playback and a second camera is selected with available footage at the time period selected, the second camera will also playback.*

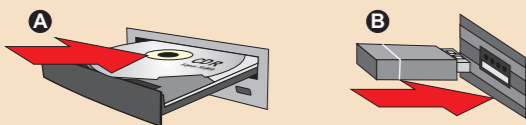
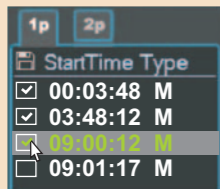


- 11 To stop playback and select another camera or time period, right-click or click on **Stop**. After selecting a new camera or time period, click on **Search** to refresh the list of records.

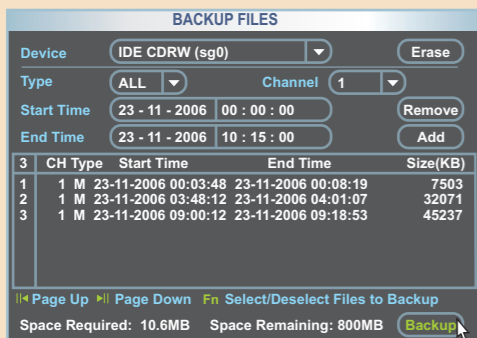
- 12 To return to live view right-click or select **Stop** to cancel any playback and right-click a second time to exit the Playback interface.

### Archiving footage

- 1 Enter the Playback interface as directed in the **Searching for footage** module and complete **Step 1** through to **Step 9**.
- 2 Identify the desired record(s) to archive within the listed records underneath the **Camera Search Result Tabs**. Click on the box to place a tick mark next to the record(s) required.
- 3 If another camera or time period is required, repeat **Step 6** through to **Step 9** of the **Searching for footage** module and tick the box alongside the additional record(s).
- 4 Insert a blank CDR, CD-RW or USB storage into the DVR.



- 5 Click on the **Backup** icon in the Playback Interface.
- 6 Review the record(s) listed in the Backup interface and verify that there is sufficient space on the storage medium selected.

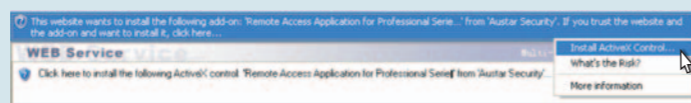


- 7 Click **Backup** to commence the backup process. All selected files will be archived to the storage medium and the player program will be added.  
*CDR disks will be finalised during the backup process to create a read-only copy for evidentiary purposes. Use CD-RW or USB if requiring storage medium that is reusable.*

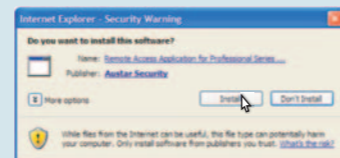


### Remote Access via Internet Explorer

- 1 Launch *Internet Explorer*.
- 2 Type the IP address of the DVR and press **Enter**.
- 3 When connecting to the DVR for the first time a security alert will display. Select **Install ActiveX Control**.



- 4 A second alert will appear to confirm installation of the ActiveX applet. Click **Install** to proceed.



*Depending upon browser security settings the ActiveX applet may not be able to install.*

*If this occurs click on **Tools** and select **Internet Options**. Click on the **Security** tab and select **Trusted Sites**. Select **Sites and deselect Require server verification (https:)** for all sites in this zone. Add the IP address of the DVR to this list and close the browser. Repeat **Step 1** through to **Step 4** above.*

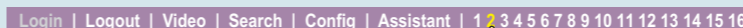
- 5 Click on **Login**.
- 6 Enter your Remote Access **User Name** and **Password**.  
*Note that Remote Access user accounts are not the same as Local Access accounts for the DVR menu interface.*



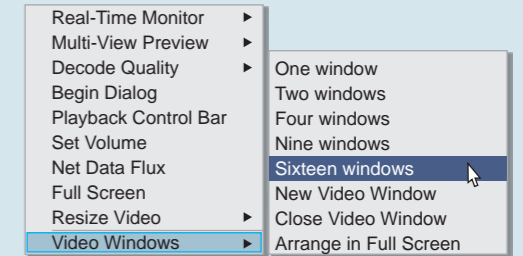
- 7 Once the password is entered select **OK** to proceed.
- 8 The top bar will light up and display numerical icons for the cameras to indicate a successful connection.

### Viewing Live Images

- 1 To view a camera using **Real-Time Monitor** select the camera number from the top bar.

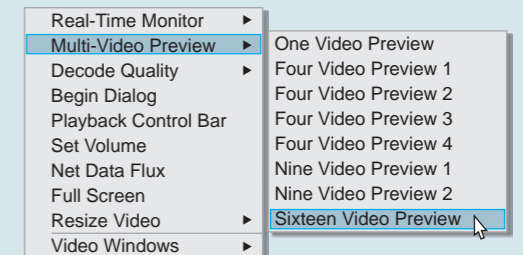


- 2 To open additional viewing windows to watch more cameras, right-click on the screen and select **Video Windows** and select the number of windows required.



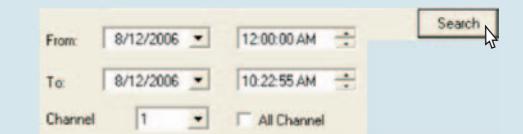
- 3 To view multiple cameras over Internet connections right-click and select **Multi-Video Preview**.

*Multi-Video Preview transmits the selected cameras in one window to save on bandwidth. The DVR can only transmit one Multi-Video Preview display at a time.*



### Viewing Recorded Images

- 1 To view playback and download files click on **Search**.
- 2 Enter the **From Date** and **From Time** and the **To Date** and **To Time** and the Camera number. Tick **All Channel** to view all camera records for the specified time period.



- 3 Select the desired record and select **Play** to view playback or **Download** to download the file to your computer.

